

『**Combustible wastes**』 kitchen garbage, waste paper (other than recyclable paper), plastic rubbish, clothes, leather items, weeds and branches, etc.

* Note that you have to use transparent or translucent garbage bags.

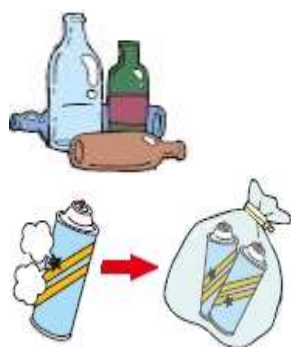
『**Incombustible items**』 * Note that you have to use transparent garbage bags.

◎**Cans** (collected on the Can-collection days)



- Cans for beverages and any canned food
 - ※ Rinse out the inside.
- Disposable cigarette lighters
 - ※ Empty and must be put in another transparent bag separately.


◎**Bottles/Jars** (collected on the Bottles/Jars-collection days)



- Bottles and Jars for beverages and food products
 - ※ Take the caps off and rinse out the inside.
 - ※ Plastic caps put with combustible garbage. Please note that steel caps are collected only on “Incombustible-collection days”.
- Spray cans and cartridge cylinders
 - ※ Empty and puncture a hole and put them in other transparent bag.

◎**Plastic bottles** (collected on the Plastic bottle-collection days)



number  on it.

- ※ After you rinse out the inside, take the caps off and crush up the bottles.
- ※ Plastic caps put with combustible garbage. Please note that steel caps are collected only on “Incombustible-collection days”.

◎**Incombustible wastes** (collected on the Incombustible-collection days)



- Glasses (Such as bottles for cosmetics products, glasses, cups, and vases etc.)
- China (Such as bowls, teacups, plates and flower pots etc.)
- Small-sized metallic nonburnable (Such as clothes hangers and frying pans etc.)

『**Large refuse**』

Large-sized non-burnable wastes and some home electric appliances such as bicycles (write “Disused/Fuyo-hin” on them), gas ranges, spring mattresses, skiers, steel desks, kerosene heaters, vacuum cleaners, microwave ovens, mini audio systems, radio-cassette recorders, VCRs, electric fans and electric rice-cooker.

『**Recyclable wastes**』 Divide into 5 groups as in newspapers, magazines, cardboards, cartons and wrapping papers. Tie up with strings respectively.

Collection Calendar of Wastes

Please separate and take out by 8:30 am on the designated day!

* Please check the QR code on the right to find out the garbage collection days and how to put out garbage in your area.



- ◎ Combustible garbage is collected twice a week.

East district Mondays and Thursdays

West district Tuesdays and Fridays

- ◎ Put out large refuse and recyclable wastes on the day according to your area. Please note that there are 5 divided areas.

- ◎ Please follow the calendar below for each item on every Wednesday.

April 2025		May 2025		June 2025	
2	Cans	7	Bottles/Jars	4	Bottles/Jars
9	Bottles/Jars	14	Plastic bottles	11	Plastic bottles
16	Plastic bottles	21	Incombustibles	18	Incombustibles
23	Incombustibles	28	Cans	25	Cans
30	Cans				
July 2025		August 2025		September 2025	
2	Bottles/Jars	6	Plastic bottles	3	Plastic bottles
9	Plastic bottles	13	Incombustibles	10	Incombustibles
16	Incombustibles	20	Cans	17	Cans
23	Cans	27	Bottles/Jars	24	Bottles/Jars
30	Bottles/Jars				
October 2025		November 2025		December 2025	
1	Plastic bottles	5	Incombustibles	3	Incombustibles
8	Incombustibles	12	Cans	10	Cans
15	Cans	19	Bottles/Jars	17	Bottles/Jars
22	Bottles/Jars	26	Plastic bottles	24	Plastic bottles
29	Plastic bottles				
January 2026		February 2026		March 2026	
7	Incombustibles	4	Incombustibles	4	Incombustibles
14	Cans	11	Cans	11	Cans
21	Bottles/Jars	18	Bottles/Jars	18	Bottles/Jars
28	Plastic bottles	25	Plastic bottles	25	Plastic bottles

- ◎ Batteries, fluorescent light bulbs, mirrors and mercury thermometers all have to be brought unwrapped to the designated places; at the city hall, branch offices or the public halls.

Keep this calendar at hand for reference.

For more information, please contact Kumagaya Garbage Collection Center.

Phone: (048)524-7121