

『**Combustible wastes**』 kitchen garbage, waste paper (other than recyclable paper), plastic rubbish, clothes, leather items, weeds and branches, etc.

* Note that you have to use transparent or translucent garbage bags.

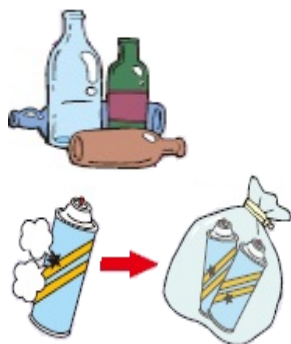
『**Incombustible items**』 * Note that you have to use transparent garbage bags.

◎**Cans** (collected on the Can-collection days)



- Cans for beverages and any canned food
 - ※ Rinse out the inside.
- Disposable cigarette lighters
 - ※ Empty and must be put in another transparent bag separately.


◎**Bottles/Jars** (collected on the Bottles/Jars-collection days)



- Bottles and Jars for beverages and food products
 - ※ Take the caps off and rinse out the inside.
 - ※ Plastic caps put with combustible garbage. Please note that steel caps are collected only on “Incombustible-collection days”.
- Spray cans and cartridge cylinders
 - ※ Empty and puncture a hole and put them in other transparent bag.

◎**Plastic bottles** (collected on the Plastic bottle-collection days)



- Plastic bottles for beverages, soy sauce, and sake with recycling number  on it.
 - ※ After you rinse out the inside, take the caps off and crush up the bottles.
 - ※ Plastic caps put with combustible garbage. Please note that steel caps are collected only on “Incombustible-collection days”.

◎**Incombustible wastes** (collected on the Incombustible-collection days)



- Glasses (Such as bottles for cosmetics products, glasses, cups, and vases etc.)
- China (Such as bowls, teacups, plates and flower pots etc.)
- Small-sized metallic nonburnable (Such as clothes hangers and frying pans etc.)

『**Large refuse**』

Large-sized non-burnable wastes and some home electric appliances such as bicycles (write “Disused/Fuyo-hin” on them), gas ranges, spring mattresses, skies, steel desks, kerosene heaters, vacuum cleaners, microwave ovens, mini audio systems, radio-cassette recorders, VCRs, electric fans and electric rice-cooker.

『**Recyclable wastes**』 Divide into 5 groups as in newspapers, magazines, cardboards, cartons and wrapping papers. Tie up with strings respectively.

Collection Calendar of Wastes

Please separate and take out by 8:30 am on the designated day!

* See 「Kumagaya City Kurashi no Calendar」 to page from 29 to 30 for more detailed information.

◎ Combustible garbage is collected twice a week.

East district Mondays and Thursdays

West district Tuesdays and Fridays

◎ Put out large refuse and recyclable wastes on the day according to your area. Please note that there are 5 divided areas.

◎ Please follow the calendar below for each item on every Wednesday.

April 2023		May 2023		June 2023	
5	Plastic bottles	3	Plastic bottles	7	Incombustibles
12	Incombustibles	10	Incombustibles	14	Cans
19	Cans	17	Cans	21	Bottles/Jars
26	Bottles/Jars	24	Bottles/Jars	28	Plastic bottles
		31	Plastic bottles		
July 2023		August 2023		September 2023	
5	Incombustibles	2	Incombustibles	6	Cans
12	Cans	9	Cans	13	Bottles/Jars
19	Bottles/Jars	16	Bottles/Jars	20	Plastic bottles
26	Plastic bottles	23	Plastic bottles	27	Incombustibles
		30	Incombustibles		
October 2023		November 2023		December 2023	
4	Cans	1	Cans	6	Bottles/Jars
11	Bottles/Jars	8	Bottles/Jars	13	Plastic bottles
18	Plastic bottles	15	Plastic bottles	20	Incombustibles
25	Incombustibles	22	Incombustibles	27	Cans
		29	Cans		
January 2024		February 2024		March 2024	
10	Bottles/Jars	7	Bottles/Jars	6	Bottles/Jars
17	Plastic bottles	14	Plastic bottles	13	Plastic bottles
24	Incombustibles	21	Incombustibles	20	Incombustibles
31	Cans	28	Cans	27	Cans

◎ Batteries, fluorescent light bulbs, mirrors and mercury thermometers all have to be brought unwrapped to the designated places; at the city hall, branch offices or the public halls.

Keep this calendar at hand for reference.

For more information, please contact Kumagaya Garbage Collection Center.

Phone: (048)524-7121